

FASETECH

Motion Systems

Presenting the RC4-PRO



Handcrafted



Adjustable



Danish Design



Easy-to-Use



Powerful

Copyright Fasetech Motion Systems 2014 - 2022

RC4-PRO

A 4DOF Motion Platform



RC4 General Info

The RacingCUBE RC4 is a 4 Degrees of Freedom motion platform made for racing and flight in mind. We use top of the line, brushless industrial motors which are able to simulate up to 25Hz vibrations and travel 100mm at 240mm/sec.

When using a motion platform for racing it is most important that the simulator can keep up with the vehicle's movements. Travel length is not a major factor, to a certain extent as the initial acceleration is more important.

The RacingCUBE's unique design is not only for looks, but also a part of the safety of the platform. To be able for us to get certified in different regions, the cover and bellows plays an important part to protect the user from shock and getting limbs stuck. We take safety very seriously and we meet the toughest demands.

Technical Specs

Hardware (Platform)

- Low inertia brushless motors
- 600kg carry weight (Motors)
- 32bit CPU
- 12bit telemetry (4x faster)
- 1ms response time
- Innovative touch display
- Emergency stop | Park button

Axis specifications

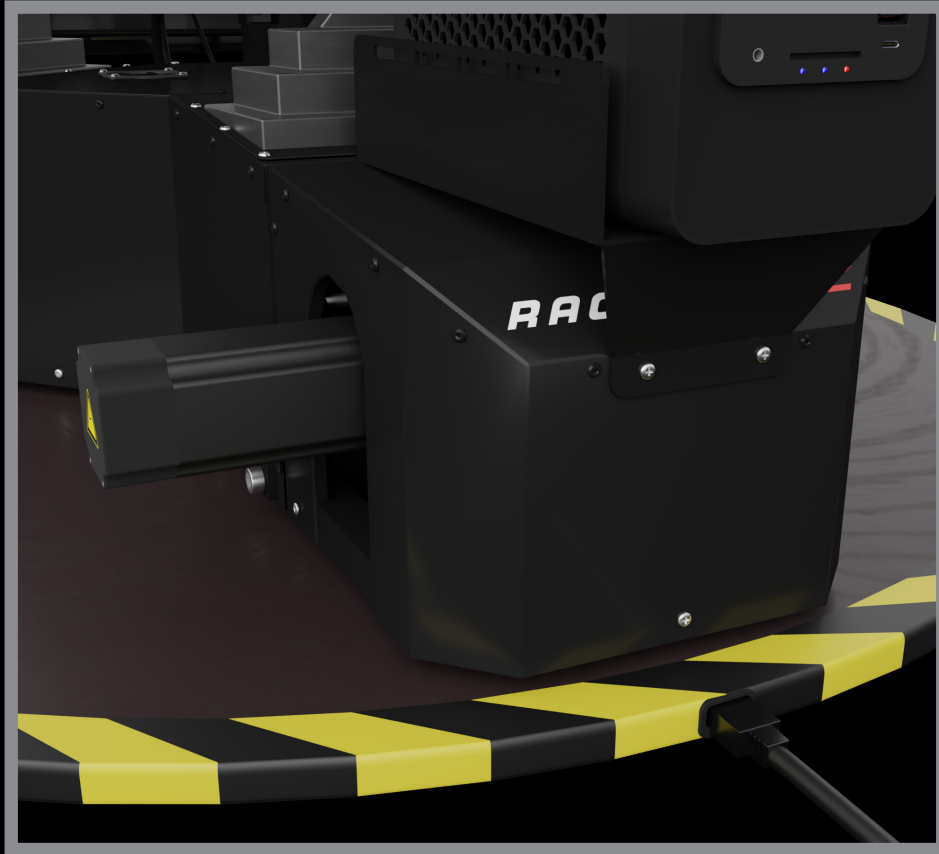
- Pitch: 28° - 72°/sec
- Roll: 28° - 72°/sec
- Heave: 100mm - 240mm/sec
- Yaw: Infinite - 72°/s

Software

- Fully customizable
- 130+ games supported
- Dashboard (add wind, bass shaker etc)
- Windows 10/11 compatible
- Control axis range
- Control motor force

RC4-PRO

Rotation Module



Continuous Rotation

The innovative rotation module offers continuous rotation at 72deg/sec. Infinitely.

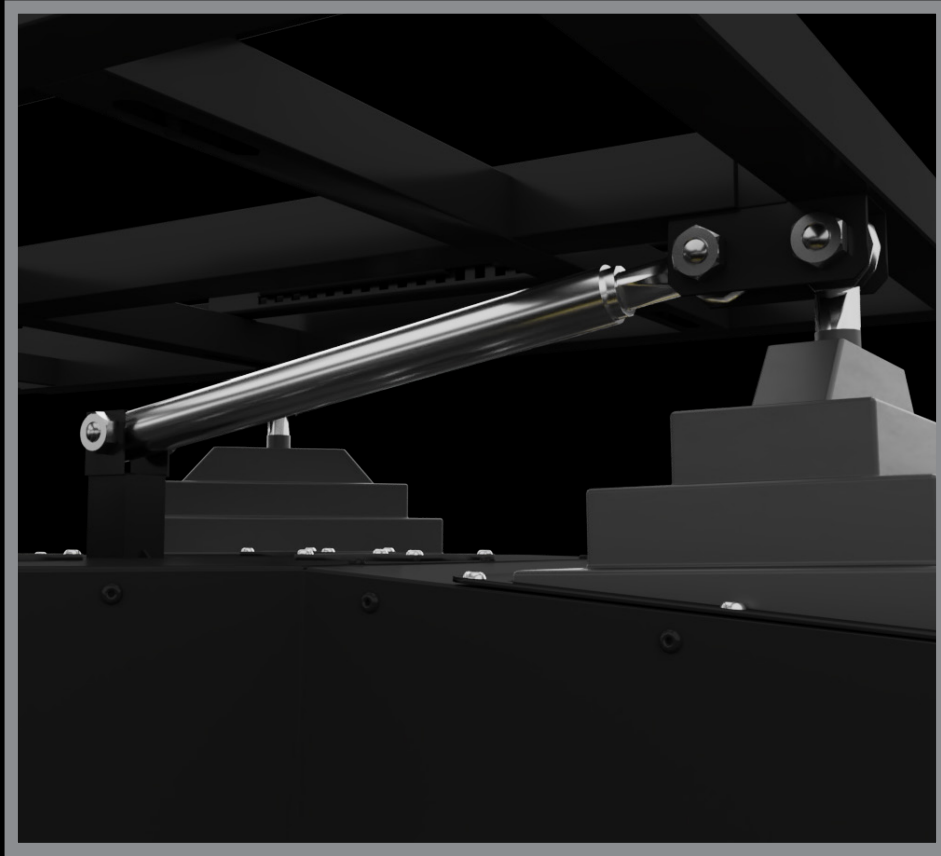
With a system that can rotate indefinitely in the same direction we need to power it through our newly developed rotation system, which we have built into the rotation plate. This makes the platform even smaller than before, and easier to move.

The rotation module contains the same actuator as the rest of the platform. This leaves enough power for any scenario you wish to use the simulator in. If you lack space or prefer a game without rotation, you can turn rotation off in our software.

With the SimTools software and display you are in control of the rotation module, you can increase or decrease rotation and decide how fast you want it to act and rotate. Your preferences are key to a good experience and therefore you can control everything. It can also be completely turned off in software and on the display.

RC4-PRO

Stabilizer



Fast & Firm Movements

We introduced the stabilizer on the RC4v2 update which have proven a significant update for the RacingCUBE.

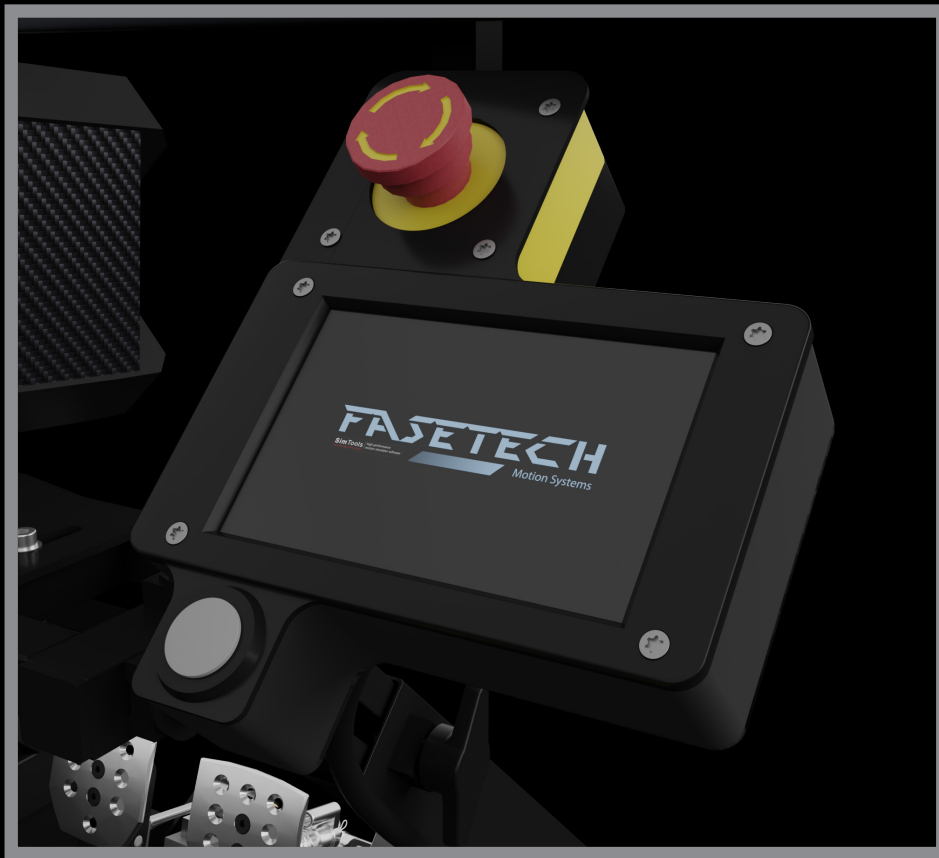
The stabilizer helps the stability of the platform and stops “wobbling” when the motors stop or change direction. It is welded directly to the bottom frame of the simulator which adds extra stability to the whole platform.

Not only does it add stability but it also protects the gearboxes from rapid wear and unwanted movements. Previously the gearboxes were the only thing dampening the forces of the platform but the stabilizer now takes most of the forward-motion force applied to the gearboxes.

The stabilizer, with all other components are made with high-grade components and our high-end quality check applies to that as a lot of force is applied to it. We consider the stabilizer as one of the most important upgrades to the platform.

RC4-PRO

Display



You are in control

The RC4-PRO offers a unique display where you can control various settings on the platform, see telemetry data and adjust your experience to your liking.

Features include but are not limited to:

- | | |
|---------------------------|--|
| • Enable/Disable Rotation | (Enables and disables rotation and amount) |
| • Peak Limiter | (Prevents abrupt movements in crashes etc.) |
| • Park Button (Physical) | (Park the simulator while stepping in/out) |
| • Performance Tuning | (Overview performance of the motors) |
| • Adaptive Speed Control | (Adjust motor speed according to in-game speed) |
| • Easy firmware updates | (Get new features and performance updates) |
| • Game data Output | (Access game data and see it directly on screen) |
| • Timer | (Set a timer to stop the platform on a schedule) |

RC4-PRO

I/O Panel

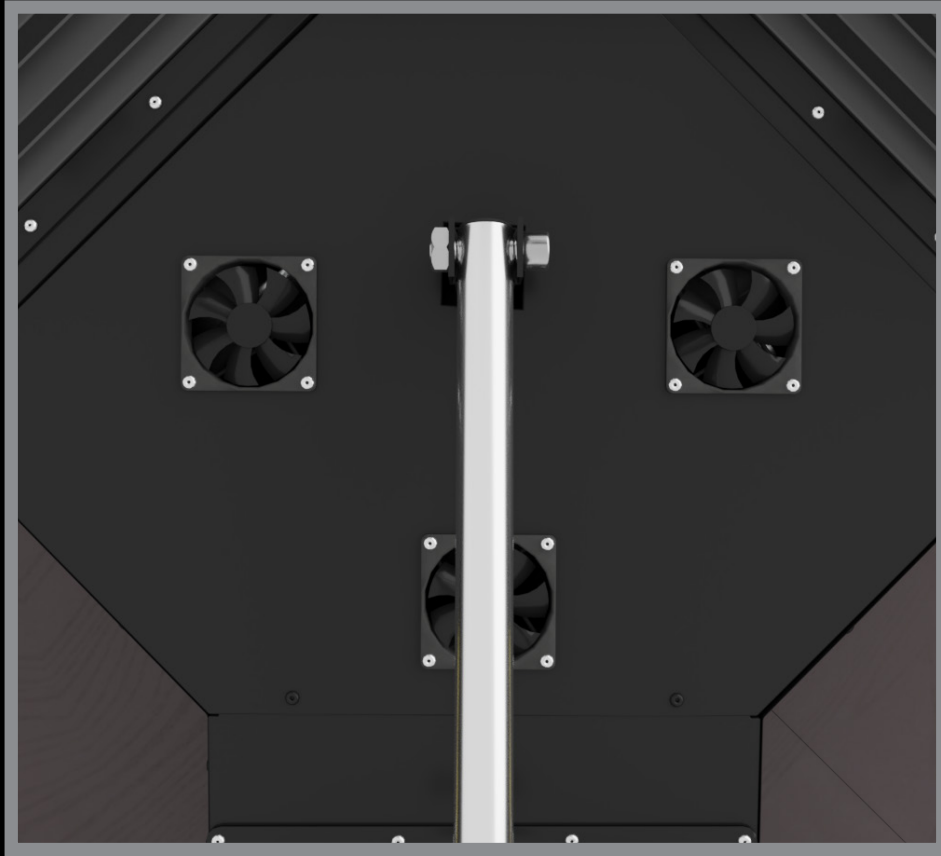


Connections

The PRO version offers multiple telemetry ports for enhanced data processing and speed. 2x USB-B ports used for game telemetry, 1x cable going to the Emergency Stop, 1x cable going to the park button and an additional 100 - 240v output for your accessories.

RC4-PRO

Cooling



Custom Cooling

How good is a motion platform if it overheats? Not very we would say. That RacingCUBE have custom cooling multiple places within its cover but the most important is the cooling on the cover.

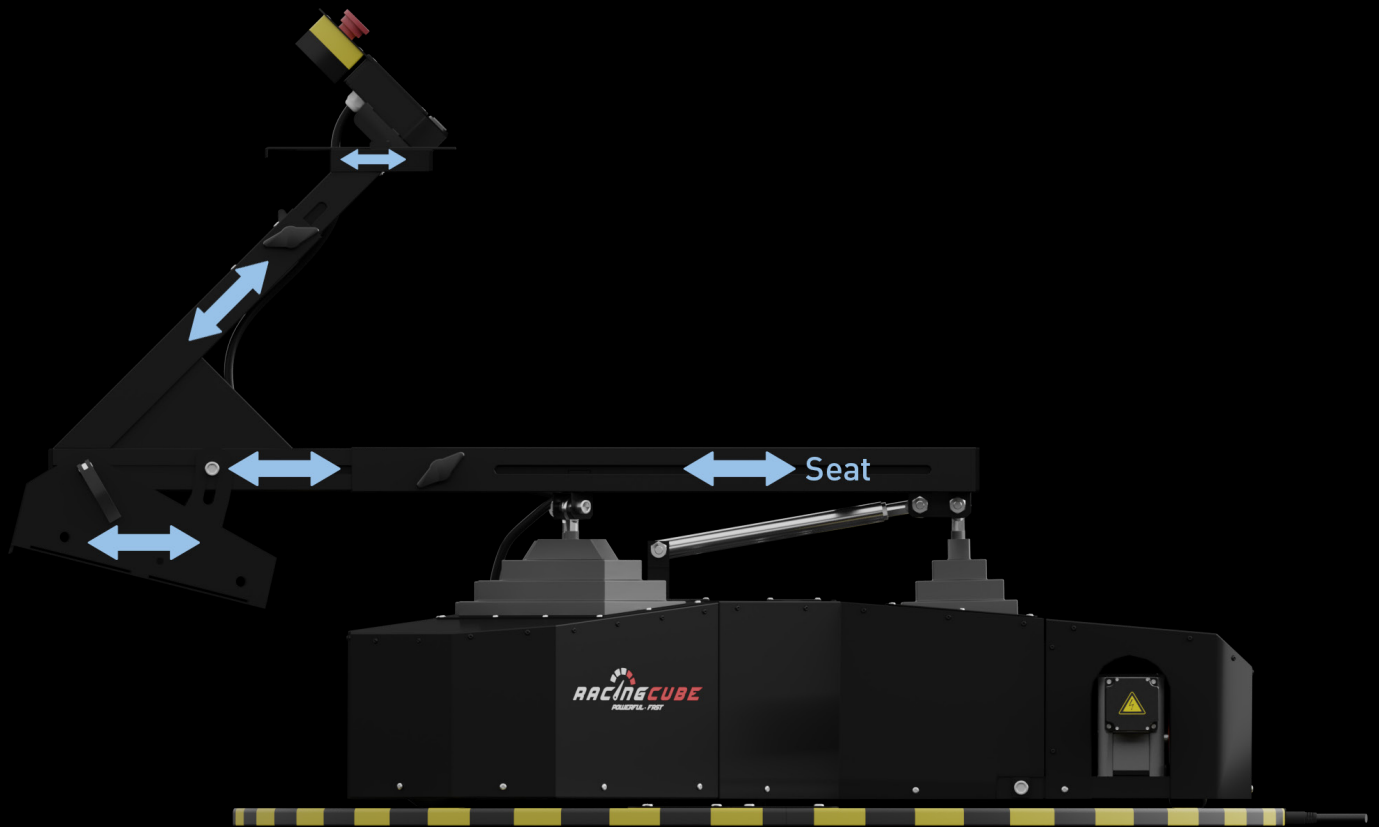
The cooling on the cover keeps the internal parts cool and prevent the electronics and actuators from overheating but it also has other functions. The 3 fans directly cooling the motors and therefore making them last longer.

As the RacingCUBE have been designed to run 24/7, dust was a concern in the initial design. The cover does not only protect the user but also the internal components. The fans on the cover have implemented dust filters and as they also create pressure within the system it will prevent the dust from entering the system in the venting cracks.

The dust filters can be removed and cleaned which we highly recommend you do.

RC4-PRO

Comfort



Adjusting Seating

The RacingCUBE caters to all audiences and therefore it is highly modular and adjustable. The platform can accommodate children and even adults over 2m.

Seat: We provide a seat slider with every platform, it supports general standards.

Upper Frame: You can slide the whole upper frame if you need wheel and pedals closer.

Pedals: You can slide the pedals individually if you need them closer.

Steering Wheel Frame: You can slide the steering wheel in a 45deg angle.

Steering Wheel Plate: You can move the steering wheel back and forth.

All parts can be moved individually to accommodate your style.

RC4-PRO

Degrees of Freedom

Heave

100mm

240mm/Sec



Roll

28deg Total

72deg/Sec



Pitch

28deg Total

72deg/Sec



Yaw (Rotation)

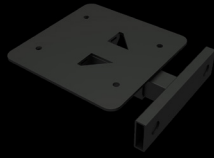
Continuous

72deg/Sec



Accessory list

Special Mounts



Shifter Mount
(Fanatec)



Handbrake
Mount



HOTAS
Mounts



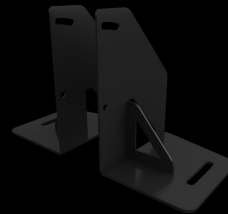
Screen Mount



Shifter Mount
(TH8A)



Vive Tracker
Mount



Fanatec
Podium Mount

These mounts can only be purchased on our webshop and are required to fit some of the accessories below to the RC4

Accessories



Sparco Sprint
Bucket



Sparco Sprint
L Bucket



Sparco R100
Reclining



HTC Vive Pro



Huawei
35" Ultrawide



Zotac Magnus
One



HTC Vive
Tracker



Thrustmaster
T300RS GT



Thrustmaster
T.Flight



Thrustmaster
TH8A Shifter



Thrustmaster
Warthog



Full Fanatec
Gear

Fully compatible accessories for the RC4. Other brands are supported too, please contact us if you are uncertain your equipment will fit.

Additional Information

Software

By purchasing a motion platform you agree to the terms applied for the SimTools motion software and to purchase a license for commercial use (Included with non-commercial). For more information please go to <https://simtools.us/>

NB. SimTools is not required to operate motion platform and other software can be used.

Please note that by using other software no support will be given.

Hardware

The platform comes functional and with every part needed to assemble and operate it. Both fully fitted and naked versions is available for purchase.

If a computer is bought through Fasetech website we will install and configure it. No games will be installed unless anything specified.

If you are fitting the simulator yourself please make sure your equipment is compatible with our mounting. If you are unsure, please contact your local distributor or us at; info@fasetech.com.

Links

Website: <https://fasetech.com/>
Facebook: <https://www.facebook.com/fasetechdk/>
YouTube: <https://www.youtube.com/c/fasetech/>

Purchase

The offered platforms is customizable and can be modified by choice. If customization is needed please forward a request to your distributor or us. When the changes has been accepted a custom order will be made ready for purchase on the website.

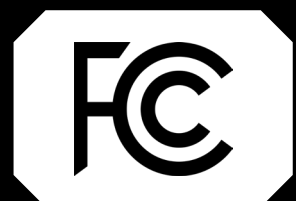
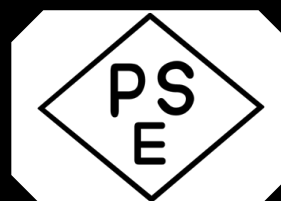
Terms & Conditions

All terms and conditions apply for all purchases, please be sure to read the newest version at:
<https://fasetech.com/shop/terms/>

Warranty

Please make sure you have read and understood our warranty, you can find the newest version at:
<https://fasetech.com/shop/terms/>

Certifications



See more information here: <https://manual.fasetech.com/en/rc4-manual/declaration-of-conformity>